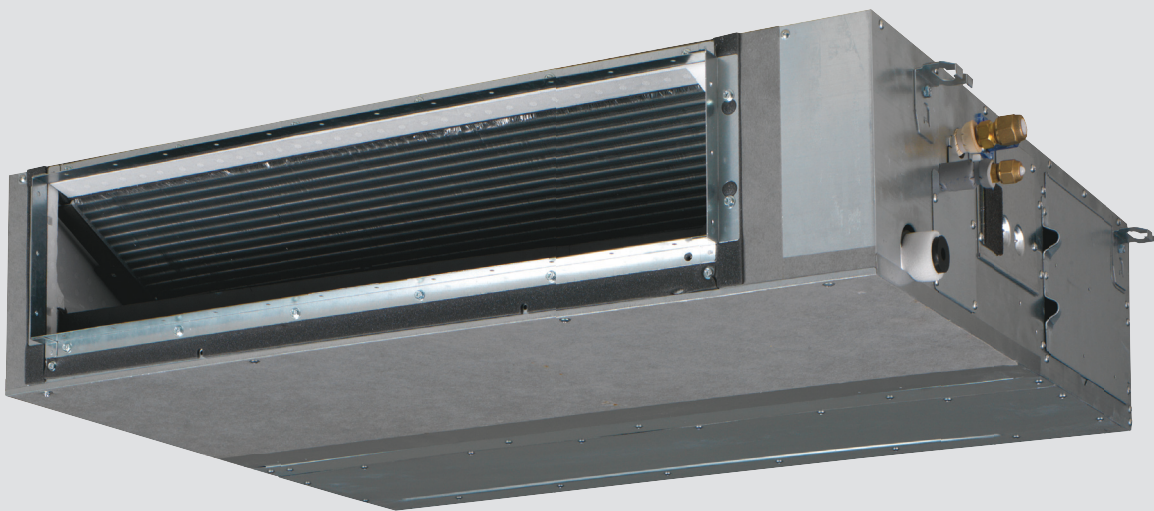


Air Conditioning  
Technical Data

FBA-A(9)



- > FBA35A2VEB9
- > FBA50A2VEB9
- > FBA60A2VEB9
- > FBA71A2VEB9
- > FBA100A2VEB
- > FBA125A2VEB

- > FBA140A2VEB



# TABLE OF CONTENTS

## FBA-A(9)

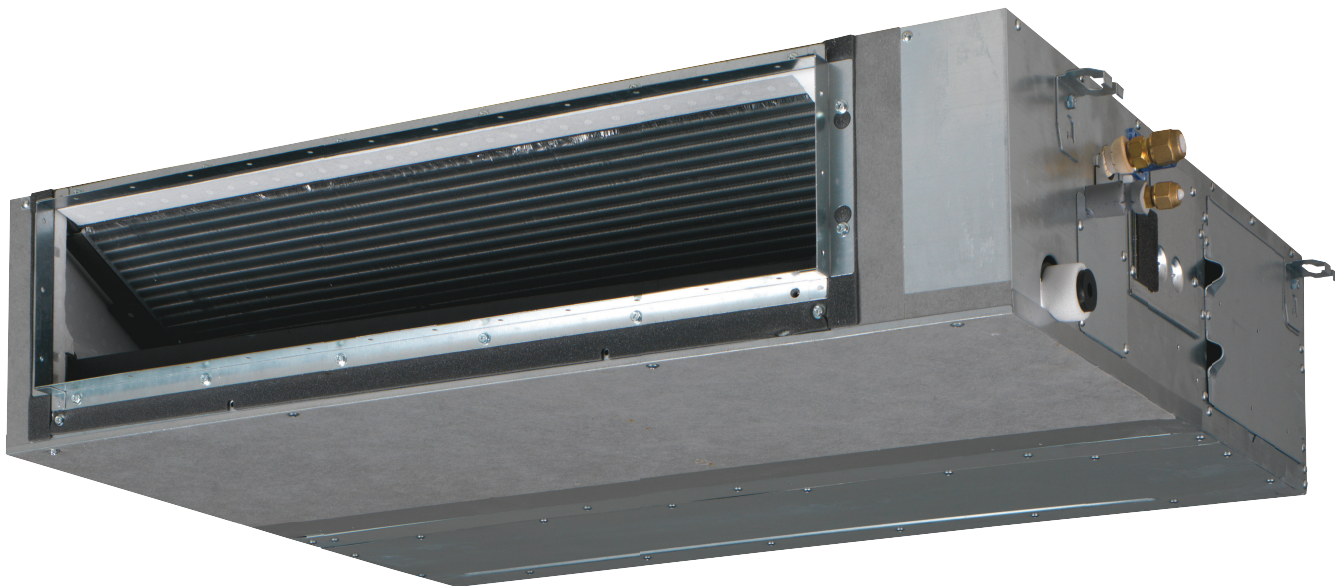
1	Features .....	2
2	Specifications .....	3
	Technical Specifications .....	3
	Electrical Specifications .....	3
3	Safety device settings.....	5
4	Options.....	6
5	Dimensional drawings .....	7
6	Centre of gravity .....	10
7	Piping diagrams .....	11
8	Wiring diagrams .....	12
	Wiring Diagrams - Three Phase .....	12
9	Sound data .....	13
	Sound Pressure Spectrum .....	13
10	Fan characteristics .....	17
11	Installation .....	19
	Installation Method .....	19

# 1 Features

Slimmest yet most powerful medium static pressure unit on the market

- Slimmest unit in class, only 245mm (300mm built-in height) and therefore narrow ceiling voids are no longer a challenge
- Low operation sound level down to 25dBA
- Medium external static pressure up to 150Pa facilitates using flexible ducts of varying lengths
- Unified indoor unit range for R-32 and R-410A
- Combining with R-32 Bluevolution technology, reduces environmental impact with 68% compared to R-410A, leads directly to lower energy consumption thanks to its high energy efficiency and has up to lower 16% refrigerant charge
- Possibility to change ESP via wired remote control allows optimisation of the supply air volume
- Discretely concealed in the ceiling: only the suction and discharge grilles are visible
- Multi zoning kit allows multiple individually-controlled climate zones to be served by one indoor unit
- Reduced energy consumption thanks to specially developed DC fan motor
- Optional fresh air intake
- Flexible installation: air suction direction can be altered from rear to bottom suction and choice between free use or connection to optional suction grilles
- Standard built-in drain pump with 625mm lift increases flexibility and installation speed

1



Infrastructure cooling



Multi zoning



Home leave operation



Fan only



Auto cooling-heating changeover



Whisper quiet



Fan speed steps



Dry programme



Air filter



Weekly timer



Infrared remote control



Wired remote control



Centralised control



Online controller via app



Auto-restart



Self diagnosis



Drain pump kit



Twin/triple/double twin application



Multi model application

## 2 Specifications

2-1 Technical Specifications				FBA35A9	FBA50A9	FBA60A9	FBA71A9	FBA100A	FBA125A	FBA140A	
Casing	Colour			Not painted (galvanised)							
	Material			Galvanised steel plate							
Dimensions	Unit	Height/Width/Depth	mm	245/700/800	245/1,000/800			245/1,400/800			
	Packed unit	Height/Width/Depth	mm	890/900/295	890/1,200/295			890/1,600/295			
Weight	Unit		kg	28.0	35.0			46.0			
	Packed unit		kg	30.5	38.0			49.0			
Heat exchanger	Fin	Type		Cross fin coil (Multi slit fins with hydrophilic treatment and Ø5Hi-XA tubes)							
Air filter	Type			Resin net							
Fan	Model			QD16A1CM/QD16A1DM							
	Type			Sirocco fan							
	Quantity			1	2			3			
	Air flow rate	Cooling	High	m³/min	15.0	18.0			29.0	34.0	
			Medium	m³/min	12.5 (1)	15.0 (1)			26.0 (1)	29.0 (1)	
			Low	m³/min	10.5	12.5			23.0	23.5	
		Heating	High	m³/min	15.0	18.0			29.0	34.0	
			Medium	m³/min	12.5 (1)	15.0 (1)			26.0 (1)	29.0 (1)	
			Low	m³/min	10.5	12.5			23.0	23.5	
	External static pressure	High		Pa	150						
Nom.		Pa	30			40	50				
Fan motor	Quantity			1							
	Model			Brushless DC motor							
	Speed	Steps		3							
	Output	Rated	W	130	230			300			
Sound power level	Cooling		dBA	60.0	56.0			58.0	62.0		
Sound pressure level	Cooling	High/Medium/Low	dBA	35.0/32.0 (1)/29.0	30.0/28.0 (1)/25.0			34.0/32.0 (1)/30.0	37.0/35.0 (1)/32.0		
	Heating	High/Medium/Low	dBA	37.0/34.0/29.0	31.0/28.0/25.0			36.0/33.0/30.0	38.0/35.0/32.0		
Control systems	Infrared remote control			BRC4C65 / BRC4C66							
	Wired remote control			BRC1D528 / BRC1E53A7 / BRC1E53B7 / BRC1E53C7							
Refrigerant	Type			R-32 / R-410A							
Piping connections	Sound absorbing insulation			Butyl Rubber							
	Liquid	Type/OD	mm	Flare connection/6,35			Flare connection/9,52				
	Gas	Type/OD	mm	Flare connection/9.52	Flare connection/12.70			Flare connection/15.90			
	Drain			VP20 (I.D. 20/O.D. 26)							
	Heat insulation			Foamed polystyrene / Foamed polyethylene							
Drain-up height			mm	625							

- Standard Accessories : Operation manual; Quantity : 1;
- Standard Accessories : Installation manual; Quantity : 1;
- Standard Accessories : Drain hose; Quantity : 1;
- Standard Accessories : Metal clamp for drain hose; Quantity : 1;
- Standard Accessories : Washer for hanger bracket; Quantity : 8;
- Standard Accessories : Screws; Quantity : 40;
- Standard Accessories : Insulation for fitting; Quantity : 2;
- Standard Accessories : Sealing pads; Quantity : 5;
- Standard Accessories : Clamps; Quantity : 4;

2-2 Electrical Specifications				FBA35A9	FBA50A9	FBA60A9	FBA71A9	FBA100A	FBA125A	FBA140A
Power supply	Phase			1~						
	Frequency		Hz	50/60						
	Voltage		V	220-240/220						

## 2 Specifications

### Notes

(1) See separate drawing for electrical data

The sound power level is an absolute value indicating the power which a sound source generates.

### 3 Safety device settings

#### 3 - 1 Safety Device Settings

FBA35-71A9  
FBA100-140A

Safety devices		FBA35-71A2VEB(9)	FBA100-140A2VEB
PCB fuse		250V, 3.15A	250V, 3.15A
Fan motor thermal protector	Maximum	110°C	110°C
Drain pump fuse		---	---

4D110741

# 4 Options

## 4 - 1 Options

4

### FBA35-71A9 FBA100-140A

Discharge		SA			
		FBA35A FBA50A	FBA60A FBA71A	FBA100A FBA125A	FBA140A
Description	Option kit				
Air discharge adaptor for round ducts	KDAP25A56A	X			
	KDAP25A71A		X		
	KDAP25A140A				X

Operation control		SA			
		FBA35A FBA50A	FBA60A FBA71A	FBA100A FBA125A	FBA140A
Description	Option kit				
Wired remote control	BRC1H51(9)W/S/K, BRC1H81W/S, BRC1D528	X	X	X	
	BRC1E53A7	X(*7)	X(*7)	X(*7)	
	BRC1E53B7	X(*8)	X(*8)	X(*8)	
	BRC1E53C7	X(*9,10)	X(*9,10)	X(*9,10)	
Central remote control	DCS302CA51	X	X	X	
Unified ON/OFF controller	DCS301BA51	X	X	X	
Intelligent touch controller	DCS601C51	X	X	X	
Schedule timer	DST301BA51	X	X	X	
Adaptor for wiring (interlock for fresh air intake fan)	KRP1B54	X	X	X	
Wiring adaptor for electrical appendices	KRP4A52	X(*4)	X(*4)	X(*4)	
Wiring adaptor for electrical appendices	KRP4A51	X(*2,4)	X(*2,4)	X(*2,4)	
Optional PCB for external electric heaters, humidifiers and/or hour meters	EKRP1B2A	X(*1,2)	X(*1,2)	X(*1,2)	
Wireless remote control H/P	BRC4C65	X	X	X	
Wireless remote control C/O	BRC4C66	X	X	X	
Simplified remote control for hotel use	BRC2E52C7	X(*6,10)	X(*6,10)	X(*6,10)	
Remote control for hotel use	BRC3E52C7	X(*6,10)	X(*6,10)	X(*6,10)	
Remote sensor	KRCS01-4B	X	X	X	
Electrical box with earth terminal	KJB411A	X	X	X	
Installation box for adaptor PCB	KRP1BA101	X	X	X	
	KRP1B101	X	X	X	
Digital input adaptor	BRP7A51	X(*3,5)	X(*3,5)	X(*3,5)	
iTouch Manager	DCM601A51	X	X	X	
Wi-Fi adaptor for smartphones	BRP069A81 (*12)	X	X	X	

- (\*1) Electric heaters and humidifiers are field-supplied. Do not install them inside the equipment (refer to installation manual EKRP1B2A).
- (\*2) When installing electric heaters, an optional PCB for external electric heaters (EKRP1B2) is required for each indoor unit.  
These options require mounting plate KRP4A96.
- (\*3) Maximally 2 optional PCBs can be mounted.
- (\*4) This option needs to be installed together with installation box KRP1B101/KRP1BA101.
- (\*5) Only possible in combination with remote control BRC2/3E52C7, BRC1E53A/B/C7, BRC1H51(9)W/S/K, BRC1H81W/S.
- (\*6) Included languages are:  
Language pack 1: English, German, French, Dutch, Spanish, Italian, and Portuguese.  
With PC cable EKPCAB3 in combination with the Updater PC software, you can additionally change the language to:  
Language pack 2: English, Bulgarian, Croatian, Czech, Hungarian, Romanian, and Slovenian.  
Language pack 3: English, Greek, Polish, Russian, Serbian, Slovak, and Turkish.
- (\*7) Included languages are: English, German, French, Italian, Spanish, Portuguese, and Dutch.
- (\*8) Included languages are: English, Czech, Croatian, Hungarian, Slovenian, Romanian, and Bulgarian.
- (\*9) Included languages are: English, Russian, Greek, Turkish, Polish, Albanian, and Slovak.
- (\*10) Language pack 3 of controller BRCE1E53C7 is different from that of controller BRC2/3E52C7.
- (\*11) Only possible in combination with wired or wireless remote control (e.g. BRC1E\*, BRC1H\*, BRC7FA\*)

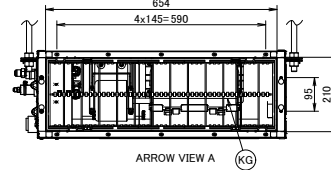
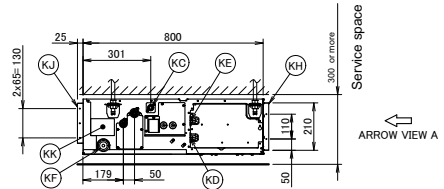
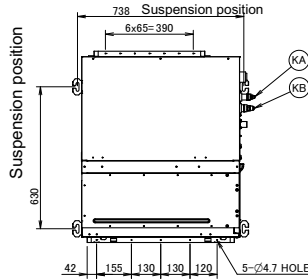
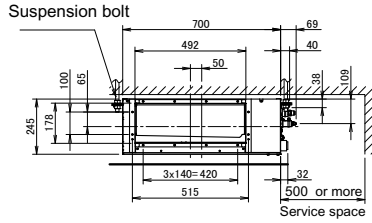
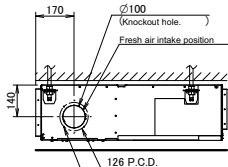
**3D106133B**



# 5 Dimensional drawings

## 5 - 1 Dimensional Drawings

### FBA35A9



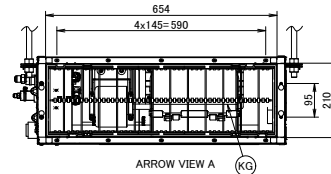
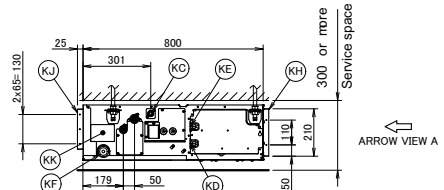
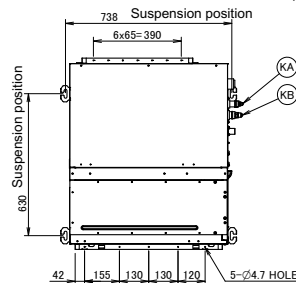
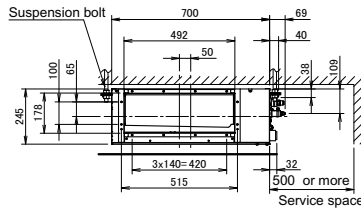
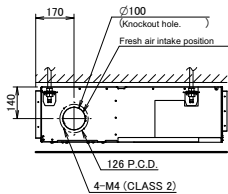
Item	Name	Description
KA	Liquid pipe connection port	Ø6.35 flared connection
KB	Gas pipe connection port	Ø9.52 flared connection
KC	Drain pipe connection	VP20 (OD Ø26, ID Ø20)
KD	Wiring connection	/
KE	Power supply connection	/
KF	Drain outlet	VP20 (OD Ø26, ID Ø20)
KG	Air filter	/
KH	Air suction side	/
KJ	Air discharge side	/
KK	Nameplate	/

**Notes**

1. When installing optional accessories, refer to their respective documentation.
2. The ceiling depth varies according to the documentation of the specific system.

**3D094988B**

### FBA50A9



Item	Name	Description
KA	Liquid pipe connection port	Ø6.35 flared connection
KB	Gas pipe connection port	Ø12.70 flared connection
KC	Drain pipe connection	VP20 (OD Ø26, ID Ø20)
KD	Wiring connection	/
KE	Power supply connection	/
KF	Drain outlet	VP20 (OD Ø26, ID Ø20)
KG	Air filter	/
KH	Air suction side	/
KJ	Air discharge side	/
KK	Nameplate	/

**Notes**

1. When installing optional accessories, refer to their respective documentation.
2. The ceiling depth varies according to the documentation of the specific system.

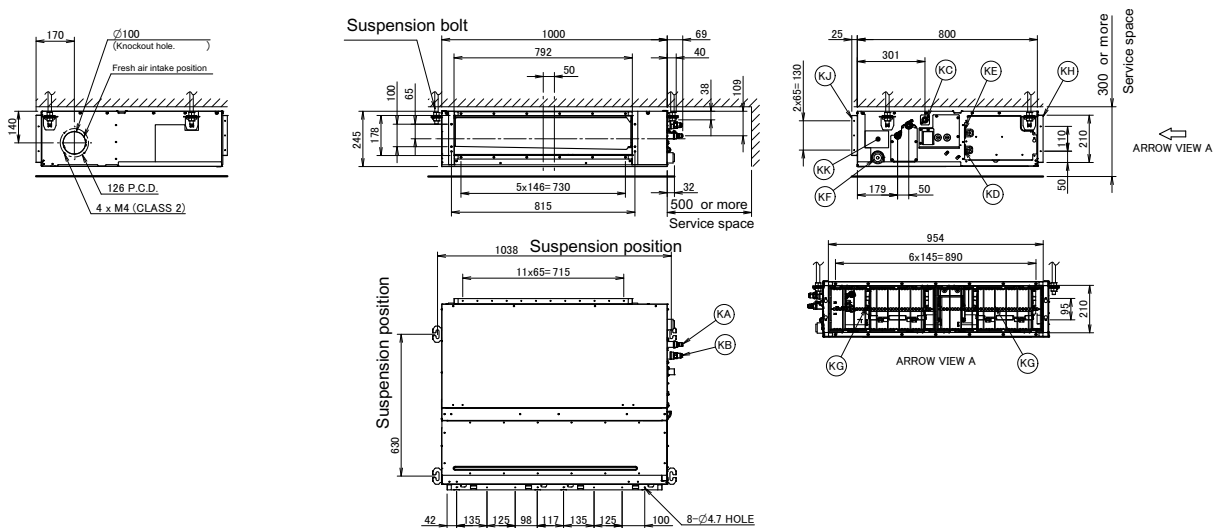
**3D094918B**

# 5 Dimensional drawings

## 5 - 1 Dimensional Drawings

5

### FBA60A9



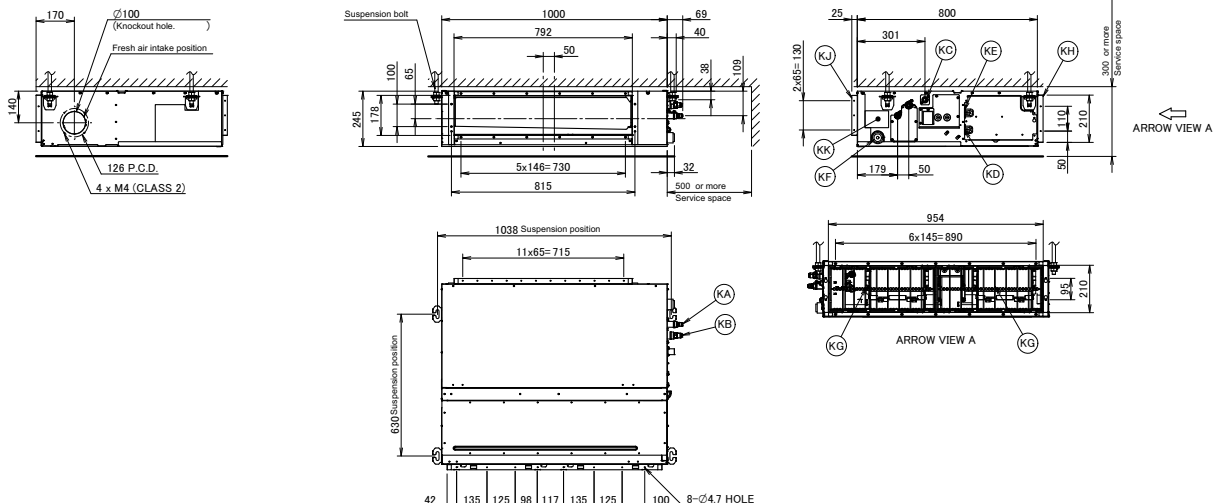
Item	Name	Description
KA	Liquid pipe connection port	Ø6.35 flared connection
KB	Gas pipe connection port	Ø12.70 flared connection
KC	Drain pipe connection	VP20 (OD Ø26, ID Ø20)
KD	Wiring connection	/
KE	Power supply connection	/
KF	Drain outlet	VP20 (OD Ø26, ID Ø20)
KG	Air filter	/
KH	Air suction side	/
KJ	Air discharge side	/
KK	Nameplate	/

Notes

- When installing optional accessories, refer to their respective documentation.
- The ceiling depth varies according to the documentation of the specific system.

3D094983B

### FBA71A9



Item	Name	Description
KA	Liquid pipe connection port	Ø9.52 flared connection
KB	Gas pipe connection port	Ø15.90 flared connection
KC	Drain pipe connection	VP20 (OD Ø26, ID Ø20)
KD	Wiring connection	/
KE	Power supply connection	/
KF	Drain outlet	VP20 (OD Ø26, ID Ø20)
KG	Air filter	/
KH	Air suction side	/
KJ	Air discharge side	/
KK	Nameplate	/

Notes

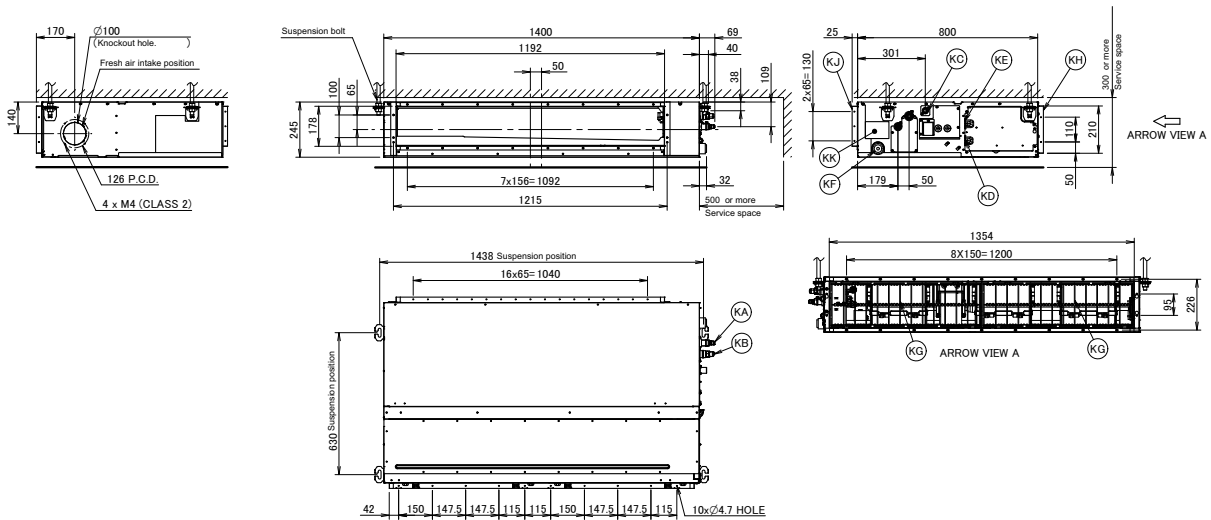
- When installing optional accessories, refer to their respective documentation.
- The ceiling depth varies according to the documentation of the specific system.

3D094915B

# 5 Dimensional drawings

## 5 - 1 Dimensional Drawings

### FBA100-140A



Item	Name	Description
KA	Liquid pipe connection port	Ø9.52 flared connection
KB	Gas pipe connection port	Ø15.90 flared connection
KC	Drain pipe connection	VP20 (OD Ø26, ID Ø20)
KD	Wiring connection	/
KE	Power supply connection	/
KF	Drain outlet	VP20 (OD Ø26, ID Ø20)
KG	Air filter	/
KH	Air suction side	/
KJ	Air discharge side	/
KK	Nameplate	/

Notes

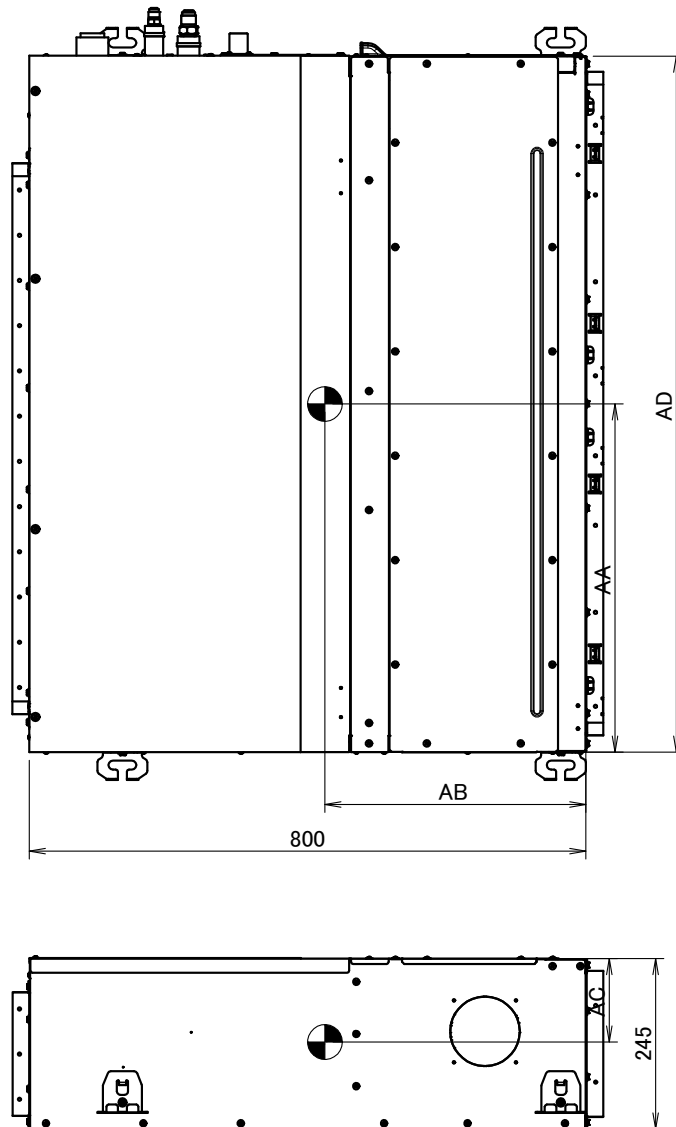
- When installing optional accessories, refer to their respective documentation.
- The ceiling depth varies according to the documentation of the specific system.

3D094914B

## 6 Centre of gravity

### 6 - 1 Centre of Gravity

**FBA35-71A9**  
**FBA100-140A**



Applicable models	AA	AB	AC	AD
FBQ35/50	410	375	125	700
FBQ60/71	525	380	125	1000
FBQ100/125/140	760	390	115	1400
ADEQ71B2VEB	525	380	125	1000
ADEQ100/125B2VEB	760	390	115	1400
FBA35/50A9	410	375	125	700
FBA60/71A9	525	380	125	1000
FBA100/125/140A	760	390	115	1400

**4D093590B**

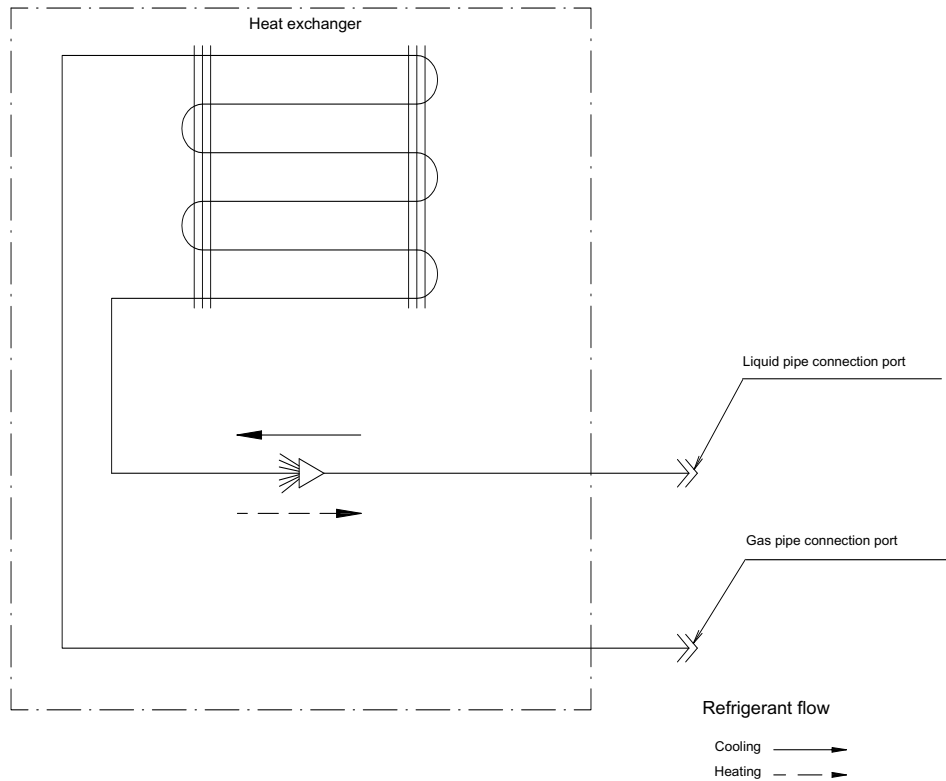
# 7 Piping diagrams

## 7 - 1 Piping Diagrams

### FBA35-71A9 FBA100-140A

Piping connections Ø

Model	Gas	Liquid
FBQ35D2VEB	Ø 9.52	Ø 6.35
FBQ50D2VEB	Ø 12.70	Ø 6.35
FBQ60D2VEB	Ø 12.70	Ø 6.35
FBQ71D2VEB	Ø 15.90	Ø 9.52
FBQ100D2VEB	Ø 15.90	Ø 9.52
FBQ125D2VEB	Ø 15.90	Ø 9.52
FBQ140D2VEB	Ø 15.90	Ø 9.52
ADEQ71B2VEB	Ø 15.90	Ø 9.52
ADEQ100B2VEB	Ø 15.90	Ø 9.52
ADEQ125B2VEB	Ø 15.90	Ø 9.52
FBA35A2VEB9	Ø 9.52	Ø 6.35
FBA50A2VEB9	Ø 12.70	Ø 6.35
FBA60A2VEB9	Ø 12.70	Ø 6.35
FBA71A2VEB9	Ø 15.90	Ø 9.52
FBA100A2VEB	Ø 15.90	Ø 9.52
FBA125A2VEB	Ø 15.90	Ø 9.52
FBA140A2VEB	Ø 15.90	Ø 9.52



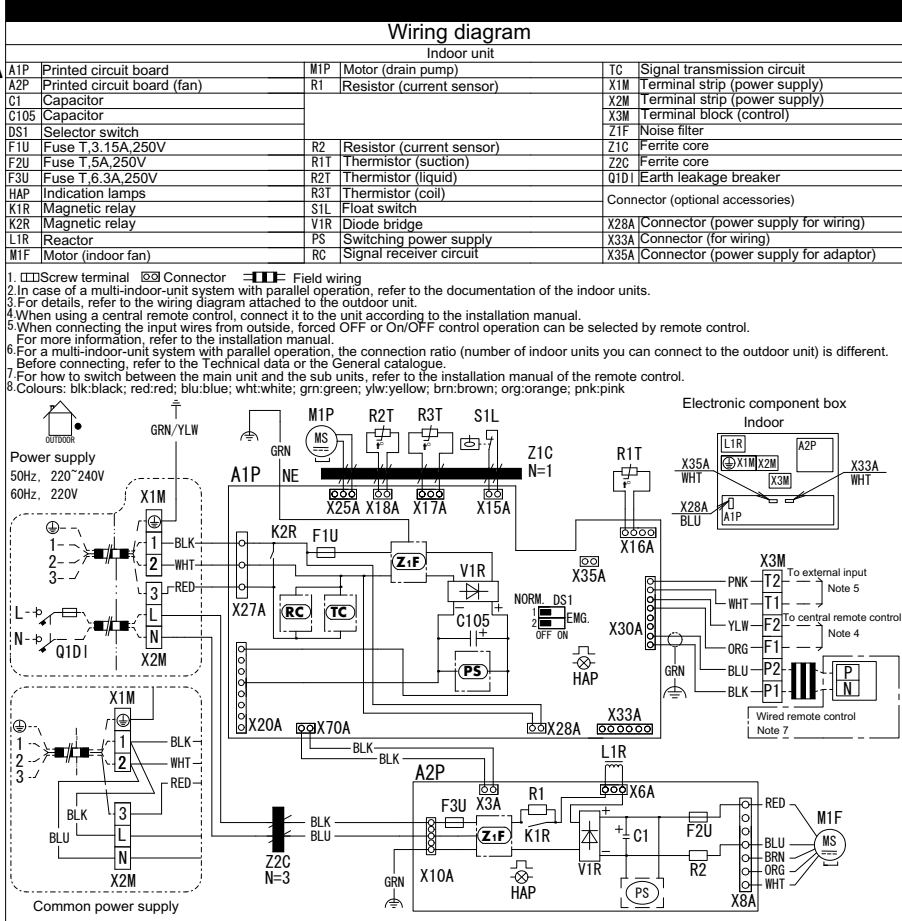
**3D090271C**

# 8 Wiring diagrams

## 8 - 1 Wiring Diagrams - Three Phase

8

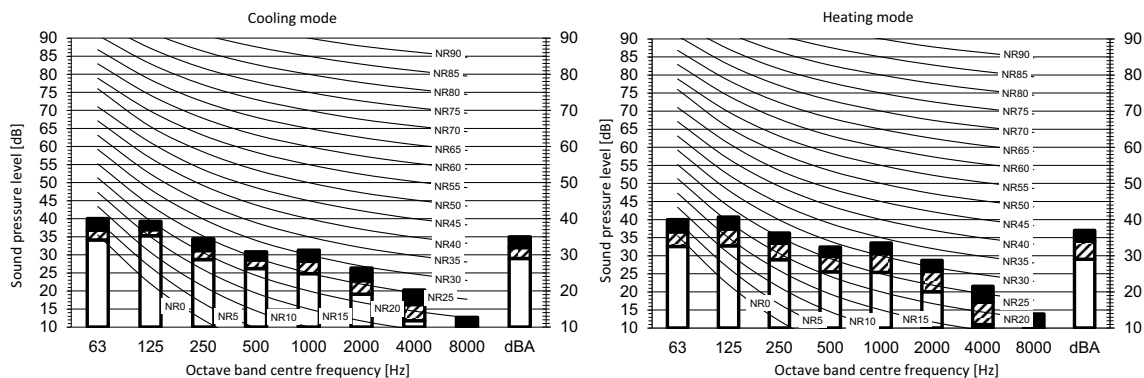
**FBA35-71A9**  
**FBA100-140A**



# 9 Sound data

## 9 - 1 Sound Pressure Spectrum

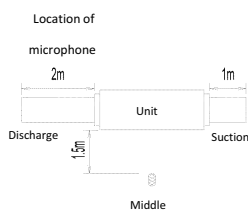
### FBA35A9



Legend  
dBA = A-weighted sound pressure level (A scale according to IEC).

A Scale Fan speed  
B High  
C Medium  
D Low

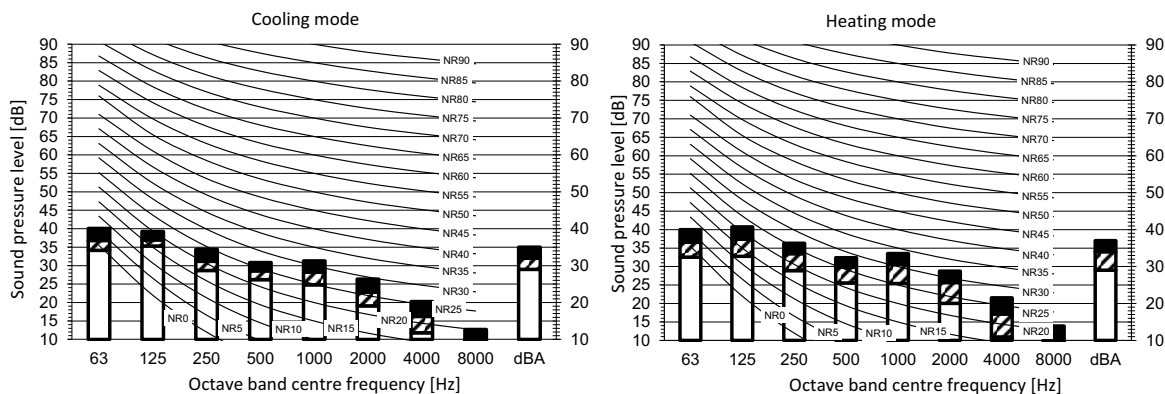
Cooling Total dB				Heating Total dB			
A	B	C	D	A	B	C	D
dBA	35	32	29	dBA	37	34	29



- Notes
1. Operating conditions: power source 220-240 V/220 V 50/60 Hz; JIS standard
  2. Background noise already taken into account.
  3. Operating noise varies depending on operation and ambient conditions.
  4. The operation noise measuring method is in accordance with JISC9612.
  5. Measuring location: anechoic chamber

3D110166A

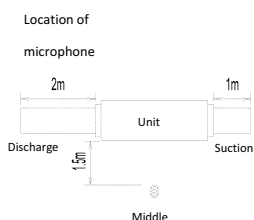
### FBA50A9



Legend  
dBA = A-weighted sound pressure level (A scale according to IEC).

A Scale Fan speed  
B High  
C Medium  
D Low

Cooling Total dB				Heating Total dB			
A	B	C	D	A	B	C	D
dBA	35	32	29	dBA	37	34	29



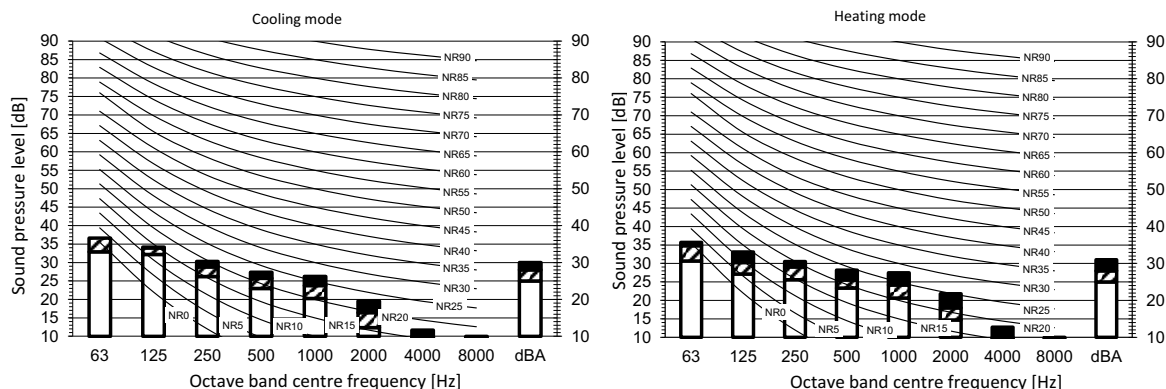
- Notes
1. Operating conditions: power source 220-240 V/220 V 50/60 Hz; JIS standard
  2. Background noise already taken into account.
  3. Operating noise varies depending on operation and ambient conditions.
  4. The operation noise measuring method is in accordance with JISC9612.
  5. Measuring location: anechoic chamber

3D110167A

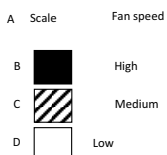
# 9 Sound data

## 9 - 1 Sound Pressure Spectrum

### FBA60A9

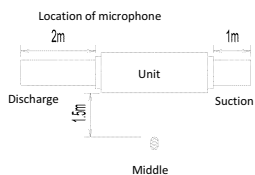


Legend  
dBA = A-weighted sound pressure level (A scale according to IEC).



Cooling		Total dB	
A	B	C	D
dBA	30	28	25

Heating		Total dB	
A	B	C	D
dBA	31	28	25

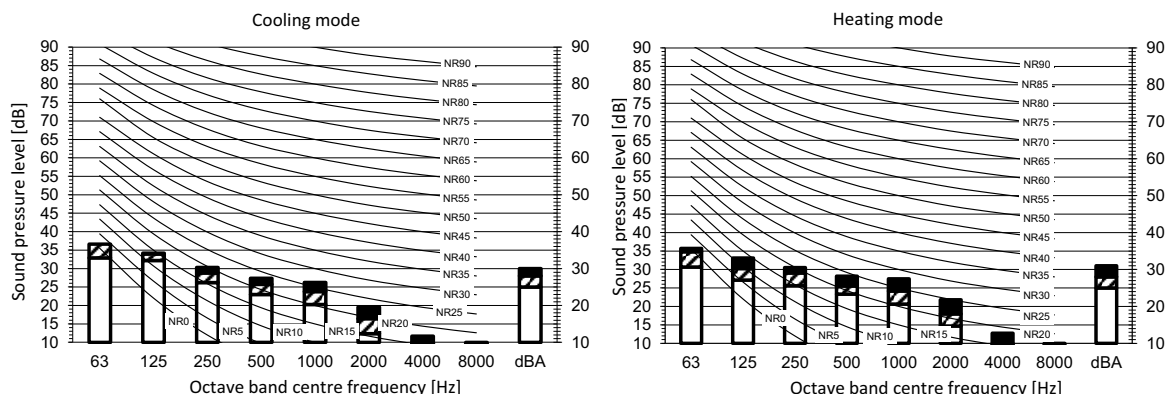


#### Notes

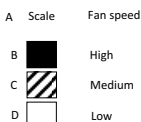
- Operating conditions: power source 220-240 V/220 V 50/60 Hz; JIS standard
- Background noise already taken into account.
- Operating noise varies depending on operation and ambient conditions.
- The operation noise measuring method is in accordance with JISC9612.
- Measuring location: anechoic chamber

3D110168A

### FBA71A9

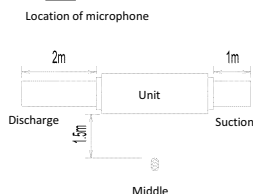


Legend  
dBA = A-weighted sound pressure level (A scale according to IEC).



Cooling		Total dB	
A	B	C	D
dBA	30	28	25

Heating		Total dB	
A	B	C	D
dBA	31	28	25



#### Notes

- Operating conditions: power source 220-240 V/220 V 50/60 Hz; JIS standard
- Background noise already taken into account.
- Operating noise varies depending on operation and ambient conditions.
- The operation noise measuring method is in accordance with JISC9612.
- Measuring location: anechoic chamber

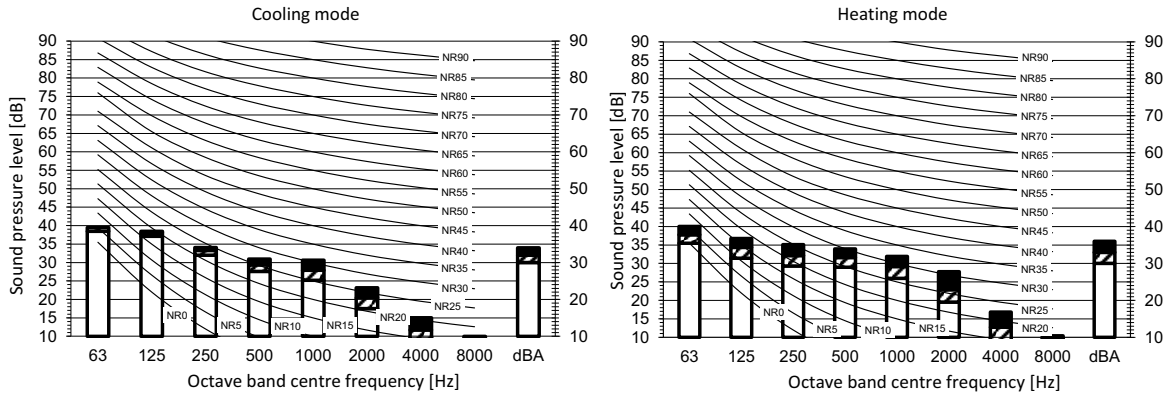
3D110169A



# 9 Sound data

## 9 - 1 Sound Pressure Spectrum

### FBA100A



Legend  
dBA = A-weighted sound pressure level (A scale according to IEC).

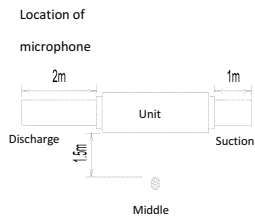
A	Scale	Fan speed
B	High	
C	Medium	
D	Low	

Cooling		Total dB	
A	B	C	D
dBA	34	32	30

Heating		Total dB	
A	B	C	D
dBA	36	33	30

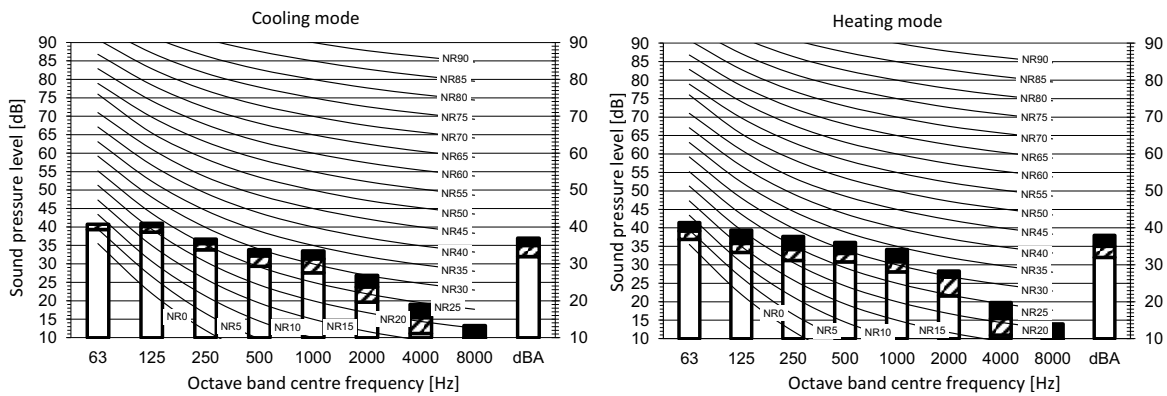
Notes

- Operating conditions: power source 220-240 V/220 V 50/60 Hz; JIS standard
- Background noise already taken into account.
- Operating noise varies depending on operation and ambient conditions.
- The operation noise measuring method is in accordance with JISC9612.
- Measuring location: anechoic chamber



3D110170

### FBA125A



Legend  
dBA = A-weighted sound pressure level (A scale according to IEC).

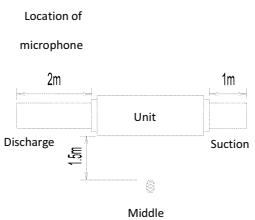
A	Scale	Fan speed
B	High	
C	Medium	
D	Low	

Cooling		Total dB	
A	B	C	D
dBA	37	35	32

Heating		Total dB	
A	B	C	D
dBA	38	35	32

Notes

- Operating conditions: power source 220-240 V/220 V 50/60 Hz; JIS standard
- Background noise already taken into account.
- Operating noise varies depending on operation and ambient conditions.
- The operation noise measuring method is in accordance with JISC9612.
- Measuring location: anechoic chamber



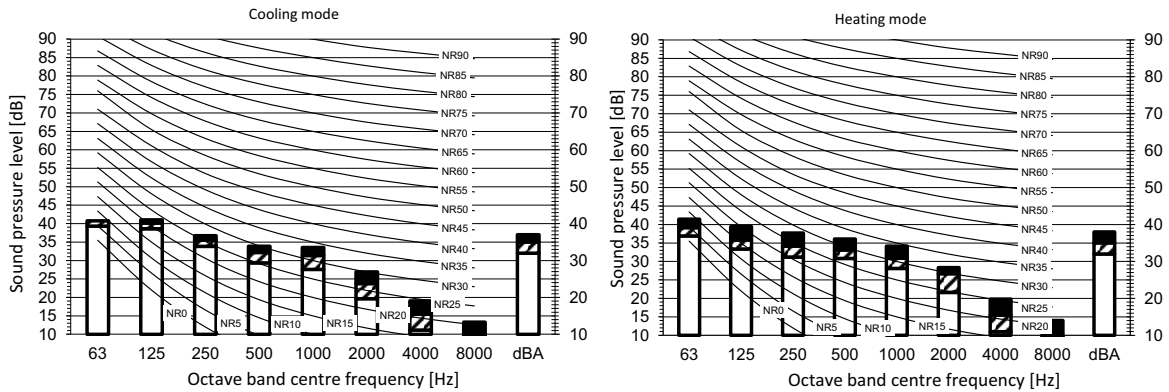
3D110171

# 9 Sound data

## 9 - 1 Sound Pressure Spectrum

9

### FBA140A



Legend  
dBA = A-weighted sound pressure level (A scale according to IEC).

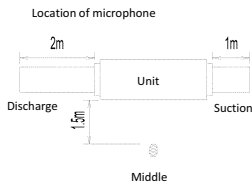
A	Scale	Fan speed
B	High	High
C	Medium	Medium
D	Low	Low

Cooling				Total dB			
A	B	C	D				
dBA	37	35	32				

Heating				Total dB			
A	B	C	D				
dBA	38	35	32				

#### Notes

1. Operating conditions: power source 220-240 V/220 V 50/60 Hz; JIS standard
2. Background noise already taken into account.
3. Operating noise varies depending on operation and ambient conditions.
4. The operation noise measuring method is in accordance with JISC9612.
5. Measuring location: anechoic chamber

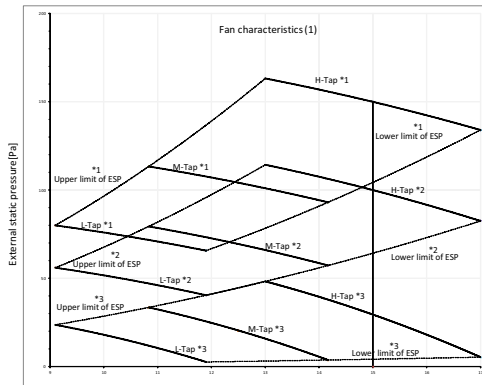


3D110172

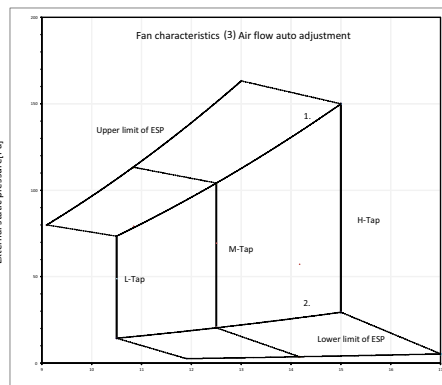
# 10 Fan characteristics

## 10 - 1 Fan Characteristics

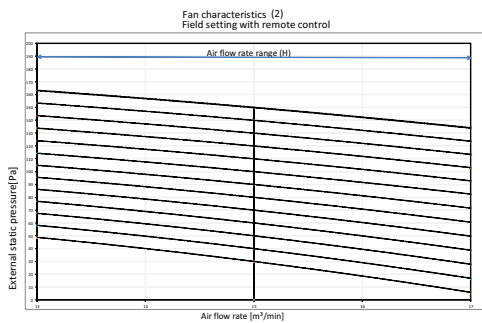
### FBA35-50A9



Mark	ESP [Pa]	Air flow rate [m <sup>3</sup> /min]
*1	MAX	150
*2	STD	100
*3	STD	30



1. Upper limit of ESP by air flow auto adjustment
2. Lower limit of ESP by air flow auto adjustment

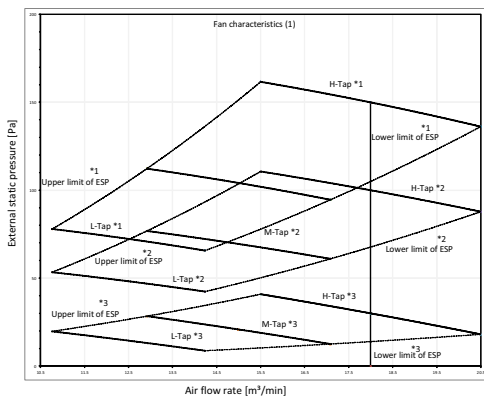


Notes:

1. The fan characteristics shown are in "fan only" mode.
2. ESP: External static pressure.

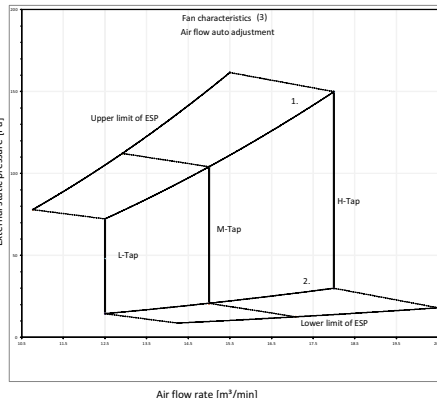
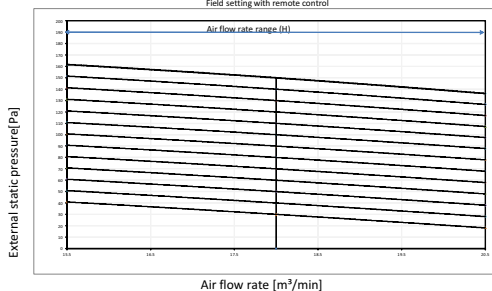
3D095521B

### FBA60-71A9



Mark	ESP [Pa]	Air flow rate [m <sup>3</sup> /min]
*1	MAX	150
*2	STD	100
*3	STD	30

Fan characteristics (2)  
Field setting with remote control



1. Upper limit of ESP by air flow auto adjustment
2. Lower limit of ESP by air flow auto adjustment

Notes:

1. Fan characteristics as shown are in "fan only" mode.
2. ESP: External static pressure.

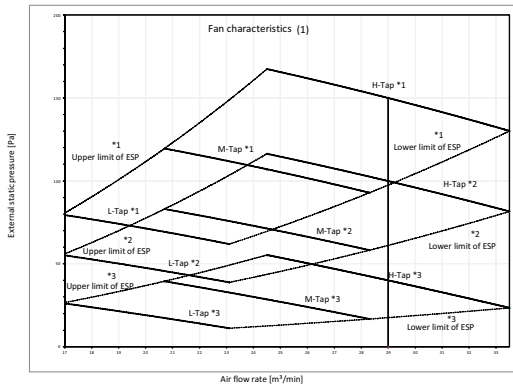
3D095524B

# 10 Fan characteristics

## 10 - 1 Fan Characteristics

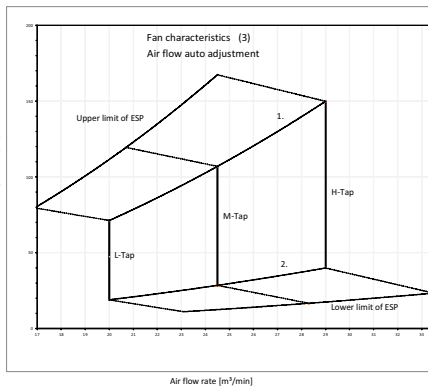
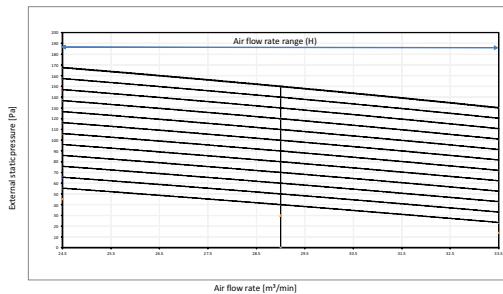
10

### FBA100A



Mark	ESP [Pa]
*1	MAX 150
*2	100
*3	STD 40

Fan characteristics (2)  
Field setting with remote control



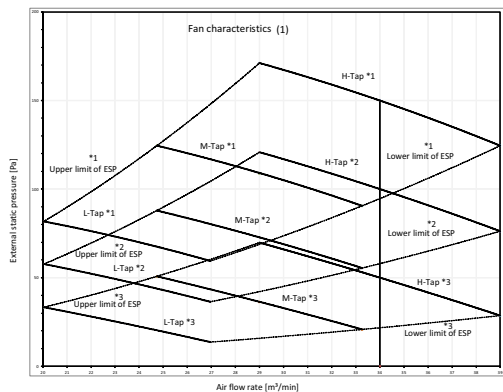
1. Upper limit of ESP by air flow auto adjustment
2. Lower limit of ESP by air flow auto adjustment

Notes:

1. Fan characteristics as shown are in "fan only" mode.
2. ESP: External static pressure.

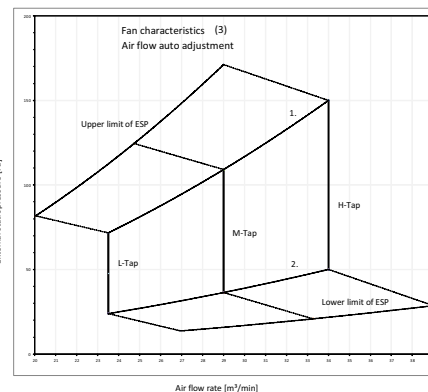
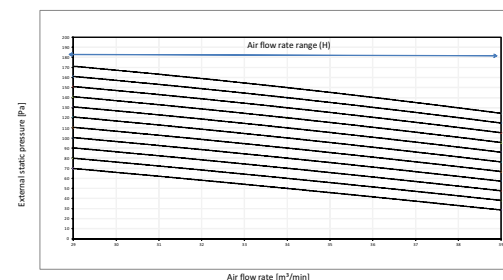
3D095526B

### FBA125-140A



Mark	ESP [Pa]
*1	MAX 150
*2	100
*3	STD 40

Fan characteristics (2)  
Field setting with remote control



1. Upper limit of ESP by air flow auto adjustment
2. Lower limit of ESP by air flow auto adjustment

Notes:

1. Fan characteristics as shown are in "fan only" mode.
2. ESP: External static pressure.

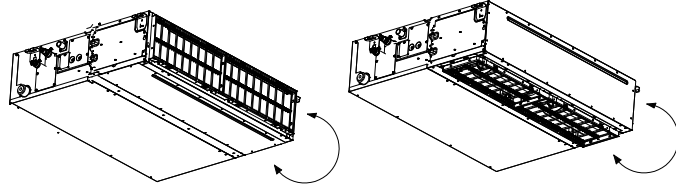
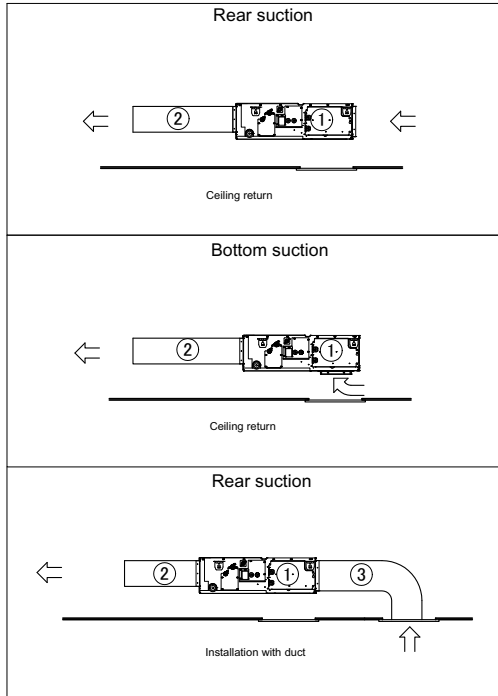
3D095527B

# 11 Installation

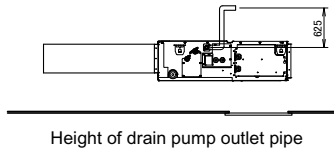
## 11 - 1 Installation Method

### FBA35-71A9 FBA100-140A

Installation methods



Easy modification from rear suction to bottom suction



Height of drain pump outlet pipe

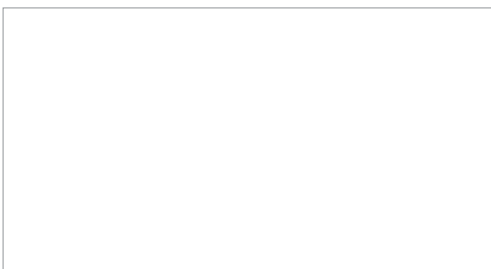
Number	Description	
①	Indoor unit	
②	Air outlet duct	Field supply
③	Air inlet duct	Field supply

3D094912A





Daikin Europe N.V. Naamloze Vennootschap - Zandvoordestraat 300, B-8400 Oostende - Belgium - [www.daikin.eu](http://www.daikin.eu) - BE 0412 120 336 - RPR Oostende



EEDEN19 11/18



Daikin Europe N.V. participates in the Eurovent Certified Performance programme for Liquid Chilling Packages and Hydronic Heat Pumps, Fan Coil Units and Variable Refrigerant Flow systems. Check ongoing validity of certificate: [www.eurovent-certification.com](http://www.eurovent-certification.com)



The present leaflet is drawn up by way of information only and does not constitute an offer binding upon Daikin Europe N.V.. Daikin Europe N.V. has compiled the content of this leaflet to the best of its knowledge. No express or implied warranty is given for the completeness, accuracy, reliability or fitness for particular purpose of its content and the products and services presented therein. Specifications are subject to change without prior notice. Daikin Europe N.V. explicitly rejects any liability for any direct or indirect damage, in the broadest sense, arising from or related to the use and/or interpretation of this leaflet. All content is copyrighted by Daikin Europe N.V.